

AXLE WORKSHEET

MAGIC TILT

PLEASE FAX TO 727-535-6267

NAME OF COMPANY: _____
 COMPANY ADDRESS: _____
 TELEPHONE NUMBER: _____

THE ANSWERS TO THE FOLLOWING QUESTIONS WILL
 PROVIDE THE INFORMATION WE NEED TO BUILD YOUR AXLE

CUSTOMERS NAME

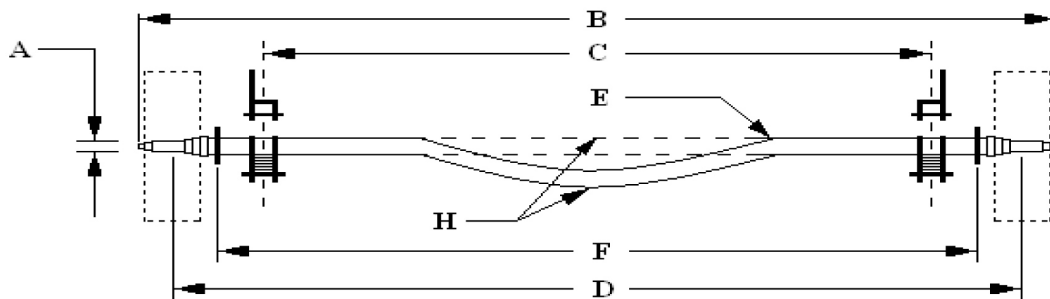
IS THIS AXLE FOR A MAGIC TILT TRAILER? YES OR NO

IF SO: TRAILER MODEL NO.

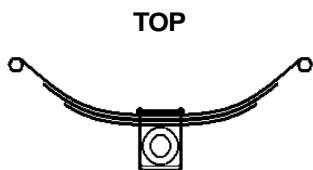
VIN NO.:

AXLE QTY:

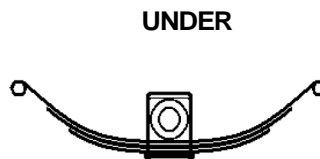
MAGIC TILT PART NUMBER



- A.) SPINDLE SIZE {OUTER AND INNER BEARING NUMBERS}.
 CHOOSE ONE: 1 1/16" X 1 1/16" 1 1/16" X 1 3/8" 1 1/4" X 1 3/4"
 STANDARD SPINDLE OR POSI-LUBE SPINDLE
- B.) OVERALL LENGTH. WITH FLANGE NO FLANGE
- C.) LEAF SPRING CENTER TO LEAF SPRING CENTER. _____
- D.) HUB FACE TO HUB FACE/CENTER OF TREAD TO CENTER OF TREAD.
- E.) MATERIAL USED TO BUILD AXLE CHOOSE ONE: 1 1/2" X 1 1/2" 2" X 2" 2" X 3"
- F.) WHETHER THE SPRING SITS ON TOP OF OR UNDER THE AXLE. (PICTURED BELOW)



OR



- G.) STRAIGHT OR BENT AXLE TUBING.
- H.) HUB STYLE.
 NO HUBS DISC BRAKES
 LIGHT DUTY DRUM BRAKES
 HEAVY DUTY
- I.) LUG PATTERN
 4 LUG
 5 LUG
 6 LUG
 8 LUG
- BEARING PROTECTORS YES NO

DISCLAIMER: Custom manufactured axles, defined as axles for non Magic Tilt trailers, are built to customers' specifications as detailed on this worksheet. Custom axles are neither returnable nor refundable when accurately built to customer's specifications.

COMMENTS/SPECIAL INSTRUCTIONS